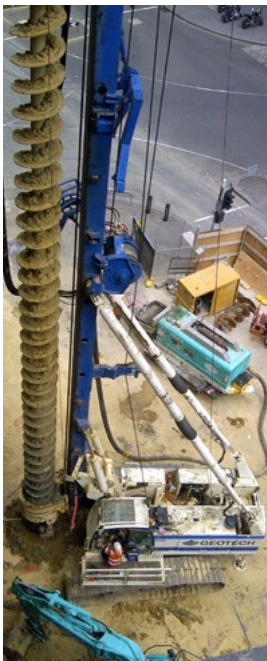


Press Office:
Holbein & Partners
Ms. Marica Granzio
Tel. +39 0422 424600
info@holbein.it

International Exhibition
2016 GEO FLUID
Drilling & Foundations
5-8 /10 - Piacenza - Italy



GEOFLUID 2016 – 5/8 October 2016: the key words of the 21st international trade show in Piacenza (IT) are exclusivity and innovation.



On our **Stand 8G (Outdoor Area)** we will be exhibiting an **E6050 LM rig** equipped with the SP (Soil Displacement) drilling Kit. **The LM (LONG MAST) Kit is an exclusive ENTEKO patent** consisting of two hydraulically operated back-stays which support two additional mast sections and provide considerably longer strokes of the rotary head. It is a high-performance kit offering the combined advantages of the back-stays and the pantograph system, while guaranteeing a rig which is **compact, lightweight and easy to transport** (no parts have to be disassembled when transporting the rig as the struts automatically fold up).

At **GEOFLUID 2016** you can also learn about two **new Enteco patents: SP-TT**, Soil Displacement-Twin Tool (pre-drilling + reaming) technology and **SP-JET**, Soil Displacement + Injection, which allow drilling even in particularly difficult soil conditions and the construction of SP piles with increasingly large diameters.

The first patent, the **SP-TT**, involves drilling in two stages (first a small-diameter hole is bored, followed by widening of the pile to the desired diameter); the second patent, **SP-JET**, is designed to improve tool penetration in particularly difficult soil conditions by injecting biodegradable foams or high-pressure liquids. SP-JET can also be used on the SP-TT system in both the pre-drilling stage and the hole enlarging and completing stage.

For any information, come and visit us in the External Area, Stand 8G.

WE LOOK FORWARD TO SEEING YOU!

